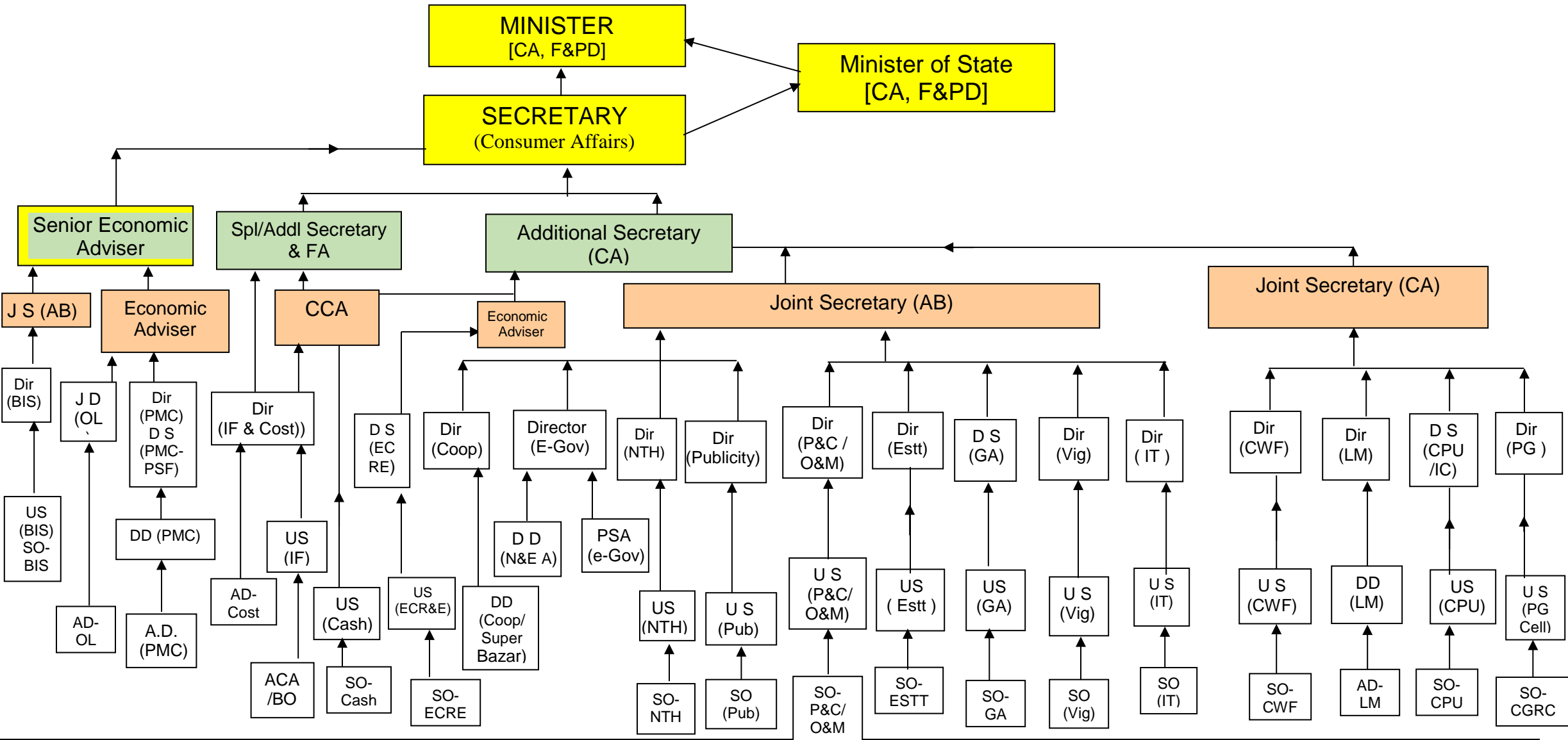


ORGANISATION CHART OF DEPARTMENT OF CONSUMER AFFAIRS (As on: November - 2018)



PMC – Price Monitoring Cell, **EIR** – Economic Intelligence Research, **ECRE** – Essential Commodities Regulation & Enforcement, **LM** – Legal Metrology, **NTH** – National Test House, **Coop** – Cooperation, **BIS** – Bureau of Indian Standards, **CGRC** – Consumer Grievances Redressal Cell, **CWF** – Consumer Welfare Fund, **CPU** – Consumer Protection Unit, **P&C** – Parliament & Coordination, **IT** – Internal Trade, **O&M** – Organisation & Methods, **GA** – General Administration, **Estt** – Establishment, **Vig** – Vigilance, **IF** – Integrated Finance, **OL** – Official Language, **IC** – International Cooperation.

Legend

Secretary (CA)	-	Shri Avinash K Srivastava (IAS)
Senior Economic Adviser	-	Shri Rohit Kumar Parmar (IES)
Additional Secretary (CA)	-	Smt Shefali Shah (IRS-IT)
Joint Secretary (AB)	-	Shri Anil Bahuguna (CSS)
Economic Adviser	-	Shri Awadhesh Kumar Chaudhary (IES)
Joint Secretary (CA)	-	Shri Amit Mehta (IOFS)

S S/A S & F A – Shri. Dharmendra

C C A -- Dr Gautam Talukdar

<u>Directors/Deputy Secretaries S/Shree</u>	<u>Division</u>	<u>Under Secretaries S/Shree</u>	<u>Branch/Section</u>	<u>Deputy / Asstt Directors S/Shree</u>	<u>Branch/Section</u>
1. B.N. Dixit	Weights & Measures/ Legal Metrology	1. Charanjit Gulati	ECR & E; Genl. Administration	1. D.K. Sonkar, DD	Coop (CCM, CFS)
2. Dharmesh Makwana	Establishment; Bureau of Indian Standards; Internal Trade; Vigilance;	2. P. K. Tyagi	Integrated Finance	2. Dr. Rakesh Joshi/ Raj Kumar Tyagi, DD	W&M/LM
3. Sita Ram Meena	Consumer Welfare Fund; Names & Emblems Act; e-Gov/INGRAM; NCH Public Grievances/CGRC	3. T.T.K. Muan	Grievances; PG cell	3. B S Kardam, DD	Names & Emblems Act
4. R C Dhankar	National Test House	4. Ms Jayalakshmi Kannan	C W F	4. Ms Lal Ramdinpuii Renthlei, DD	PMC-EIR
5. Alok Kumar Verma	Publicity/Media Coordn	5. Ms Jayashree Narayanan	C P U / IC	5. Shri Satender Kumar, DD	PMC-EIR
6. Abhay Kumar	Price Monitoring Divn; Parliament & Coord; O&M Unit;	6. A K Pandey	B I S; Internal Trade; Establishment	6. Ms. Jayanti Kala, DD	PMC-EIR
7. Singh Veer Pratap	Integrated Finance; Costing Cell	7. Anand Joshi	P&C, O&M Unit; e-Gov Publicity/Media Coord	7. Shailendra Singh, AD	W&M/LM
8. Surendra Singh (DS)	Essential Commodities Regulation & Enforcement Act; PMC (PSF related work)	8. Paramjit Singh Thakur	Vigilance; Cash	8. Om Prakash, AD	O L / Rajbhasha
9. Gokul Chandra Rout (DS)	Consumer Protection Unit / IC; General Administration;	9. Sunil Kumar Mishra	National Test House	9. Ms Priya Sarraf, AD	PMC, EIR
10. S.S. Thakur	Cooperation			10. Deepak Garg, AD	Costing Cell
11. Yash Pal	Joint Director (OL)			11. Venkat Hariharan Asha, AD	PMC, EIR
NIC Cell :					
1) Shri Satish Kumar --	Technical Director				
2) Shri N Natarajan --	P.S A.				